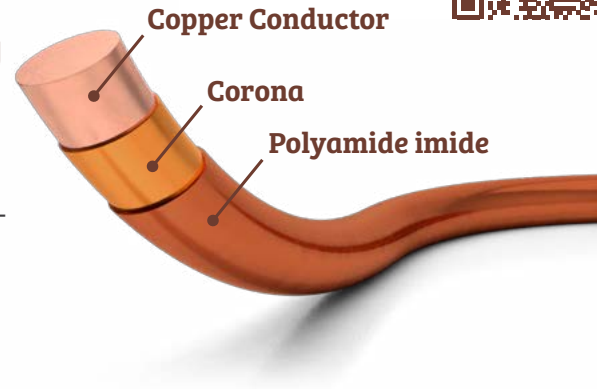


EmTherm CR^{PLUS}

I.E.C 60317 - 13

EmTherm CR^{PLUS} is an advanced Corona Resistant enamelled copper wire coated with polyamide enamel over new generation corona, belonging to C (220°C) thermal class, with diameters between 0.20 and 3.60 mm.

Providing thermal resistance up to 220°C, EmTherm-CR^{PLUS}, possess the feature being winded at high speeds and longer lifetime up to 50 times due to new generation nano-particle added corona enamel produced through nanotechnology.



Fields of Use:

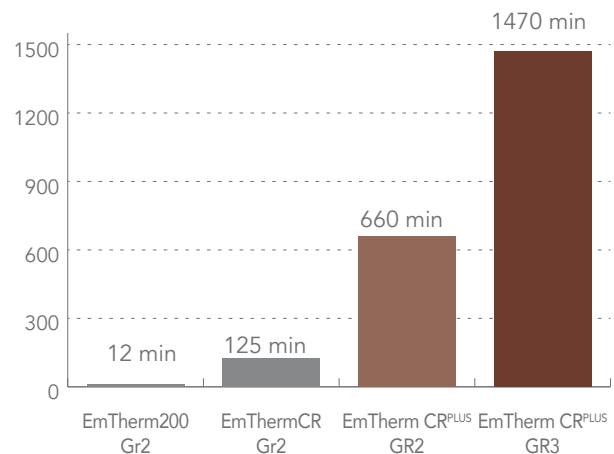
- Inverter driven motors
- Power transformers
- Power bridges
- Semi-hermetic compressor motors

Thermal Class (°C)	Class C, 220°C
Insulation Base Coat	Corona
Insulation Top Coat	Polyamide imide
Production Range (mm)	0.20 - 3.60 mm
Standartlar TS	TS EN 60317-13
Standards I.E.C	I.E.C 60317 - 13
Heat Shock (°C)	≥ 245°C
Cut-Through Temperature (°C)	≥ 360°C
Soldering Temperature (°C)	Non-applicable
Bonding Temperature (°C)	Non-applicable
Re-softening Temperature (°C)	Non-applicable
Normal Solvent Resistance	5H
Dipping Varnish Resistance	Very good
Refrigerant Resistance	Very good
Transformer Oil Resistance	Very good

EmTherm200, EmTherm-CR ve EmTherm-CR^{PLUS}

Corona Resistance Test

Test Conditions: 20kHz 1,5 kV p-p 155°C

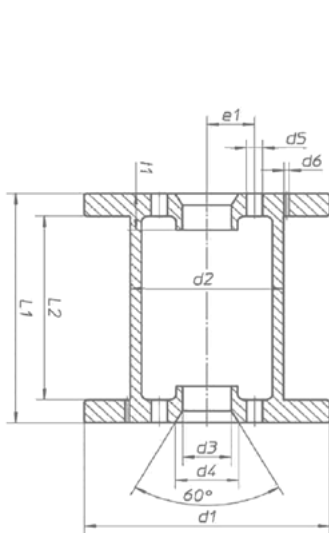


Distinct Features	Longer lifetime up to 50 times due to new generation corona coating produced by nanotechnology.
Fields of Use	Motors with long life of use without maintenance requirements, power transformers, inverter driven motors, generators, semi-hermetic compressor motors, high power motors.

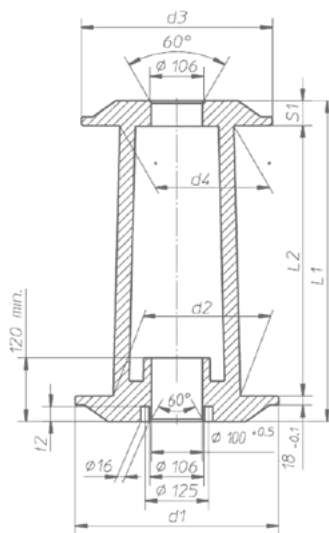
Reel & Packaging

Reel Type	Average Reel Capacity		Dimensions (mm)					L1	L2	Number of Reels Per Package
	Type Code	kgs	lbs	d1	d2	d3	d4			
Cylindrical Reel										
K 125	2.5	5.5	125	80	16	24	7	125	100	12
K 160	6-8	13-18	160	100	22	34	13	160	128	4
K 200	12-14	26-30	200	125	22	34	13	200	160	2
K 250	20-24	44-52	250	160	22	34	13	200	160	1
Conical Reel										
A 250 / 400	35-40	77-88	250	160	100	140	236	400	335	–
A 315 / 500	70-90	155-200	315	200	100	180	300	500	425	–
A 400 / 630	160-180	350-400	400	250	100	224	375	630	530	–
Bi-Conical Reel										
HKV 160	5-7	11-15	160	90	22	34	–	160	85	–
HKV 200	10-15	22-33	200	112	22	34	–	200	106	–

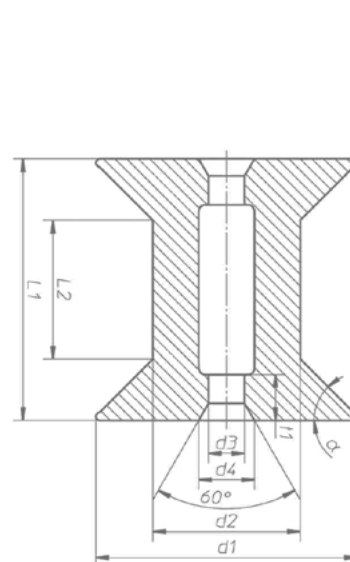
Pt Reel									
Reel Type	Tare of reel (gr)	Dimensions (mm)							Average Reel Capacity (AL) (kg)
			D2	d1	d2	w	h	a	
PT-4	340	124	140	74	86	170	26	15	1-2
PT-10	620	160	180	96	110	200	26	15	3-5
PT-15	740	180	200	96	110	200	30	15	5-8
PT-25	1000	215	230	110	130	250	30	15	10-12
PT-60	2000	270	300	150	180	350	45	25	24-26
PT-90	2800	300	315	180	200	425	100	38	35-40
PT-200	7300	375	400	225	250	530	100	50	70-80



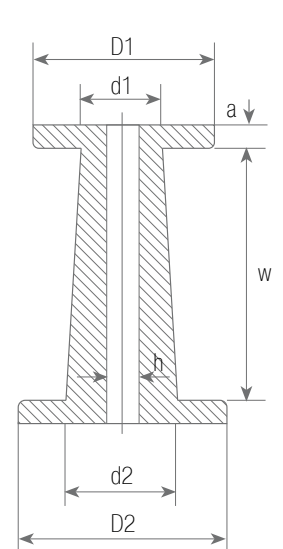
Cylindrical Reel



Conical Reel



Bi-Conical Reel



Pt Reel